



明志科技大學  
MINGCHI UNIVERSITY OF TECHNOLOGY

2025

# 3+1 IIUM & MCUT ELECTRICAL&ELECTRONIC/ MECHANICAL/MECHATRONICS ENGINEERING

Scholarship and job after graduation by Easy Field/East Field Corporation in Taiwan

**EFC** 易發精機  
EASY FIELD CORPORATION

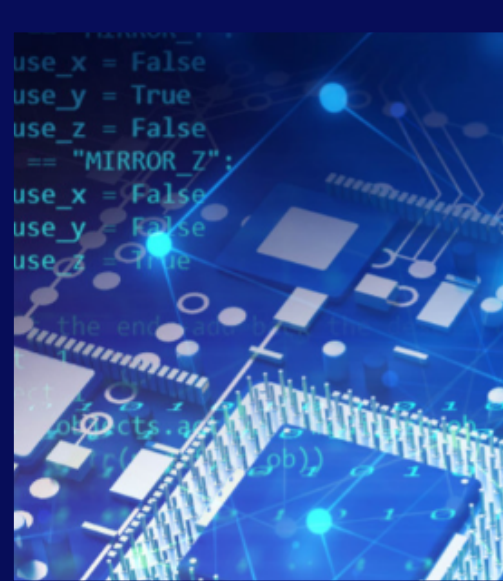
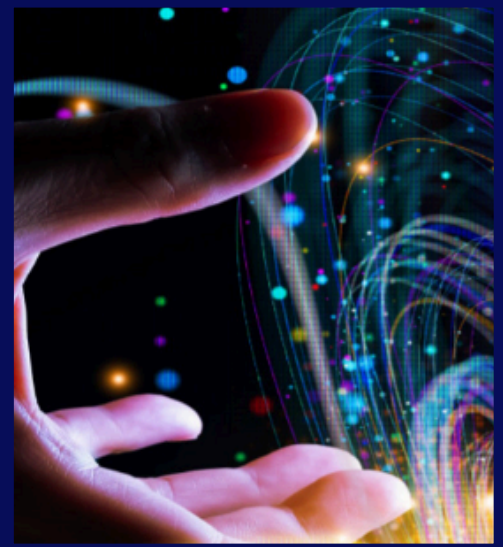
**TONO**  
EAST FIELD CORPORATION  
東野精機

## ELIGIBILITY CRITERIA:

- ✓ Open to Electrical & Electronic, Mechanical, and Mechatronics Engineering students only
- ✓ Credit hours fulfilled: > 65 CH
- ✓ Able to follow study plan for the programme  
[Final year at MCUT, Taiwan]

Join the briefing to know more about the programme:

<https://iium.zoom.us/j/92430920217>  
Meeting ID: 924 3092 0217



DATE/TIME : 17 FEBRUARY 2025, 11AM

APPLY HERE

## **ONE-year of Study @MCUT**

### **TWO Bachelor's Degree in Engineering**

## **ONE-year of Employment @TAIWAN**

- ✓ Earn another Bachelor's Degree in Engineering from MCUT
- ✓ NTD 100,000 (RM 13,441) annual tuition fee @Ming Chi University of Technology (MCUT), Taiwan funded by the Ministry of Education, Taiwan
- ✓ Monthly stipend of NTD 10,000 (RM 1,344) funded by Easy Field Corporation/East Field Corporation, Taiwan during study @MCUT
- ✓ Basic monthly salary of NTD 30,000 (RM 4034) @ Easy Field Corporation/East Field Corporation, Taiwan upon completion of study
- ✓ Other benefits @ Easy Field Corporation/East Field Corporation, Taiwan – Year-end bonus, free employee group insurance

## **ELIGIBILITY**

- Commencement Date: September 2025
- Programme of Study (IIUM Courses to be Taken in MCUT)
  - Bachelor in Electrical and Electronics Engineering
    - FYP1, FYP2, 2 Technical Electives, 2 Free Electives, 2 CoCu Skills
  - Bachelor in Mechanical Engineering
    - FYP1, FYP2, 4 Technical Electives, 2 Free Electives, 2 CoCu Skills
  - Bachelor in Mechatronics Engineering
    - FYP1, FYP2, 2 Technical Electives, 2 Free Electives, 2 CoCu Skills

## **PROJECTED EXPENDITURES**

- MCUT Tuition Fee (after sponsorship) - NTD 760/semester x 2 = 1520 (RM 205.40/year)
- Hostel – NTD 4,000/semester (Male) x 2 = 8,000 (RM 1081.45/year); NTD 5,000/semester (Female) x 2 = 10,000 (RM 1344/year)
- Visa – Single Entry Resident Visa NTD 2,200 (RM 297) + Alien Residency Certificate (ARC) NTD 1,000/year (RM 134.40)
- Health insurance – NTD 3,000 (1<sup>st</sup> 6 months) +4,956 (2<sup>nd</sup> 6 months) = 7,956 (RM 1076.95) during the 1<sup>st</sup> year

## **INTERESTED?**

- Join our online briefing
- Consult your academic advisor